

# CENTRAL NERVOUS SYSTEM

*Overview of Anatomy*

Jiří Valenta

Pavel Fiala



**Central Nervous System**  
Overview of Anatomy

**prof. MUDr. Jiří Valenta, DrSc.**  
**doc. RNDr. Pavel Fiala, CSc.**

---

Reviewers:

prof. MUDr. Josef Stingl, CSc.  
prof. MUDr. Libor Páč, CSc.

Published by Charles University in Prague, Karolinum Press  
as a teaching text for the Faculty of Medicine in Pilsen  
Prague 2012  
Typeset by DTP Karolinum Press  
First edition

© Charles University in Prague, 2012  
© Jiří Valenta, Pavel Fiala, 2012

The text has not been revised by the publisher

ISBN 978-80-246-2067-1  
ISBN 978-80-246-2647-5 (online : pdf)



Charles University in Prague  
Karolinum Press 2014

<http://www.cupress.cuni.cz>



# Contents

<b>Preface</b> .....	9
<b>1. Cells of the nervous system</b> .....	11
1.1 Neurones .....	11
1.2 Neuroglia .....	13
1.3 Ependyma .....	14
<b>2. Development of the central nervous system</b> .....	15
<b>3. Spinal cord (medulla spinalis)</b> .....	17
3.1 External features and vertebromedullary topography .....	17
3.1.1 Vertebromedullary topography .....	19
3.2 Grey matter of the spinal cord – substantia grisea .....	19
3.3 White matter of the spinal cord – substantia alba .....	21
<b>4. Brain stem</b> .....	24
4.1 Medulla oblongata (Bulbus) .....	25
4.1.1 External features .....	25
4.1.2 Inner structure .....	26
4.2 Pons of Varolus .....	27
4.2.1 External features .....	27
4.2.2 Inner structure .....	28
4.3 Rhomboid fossa .....	28
4.3.1 The floor and the roof of the 4 <sup>th</sup> ventricle .....	28
4.3.2 Nuclei of the cranial nerves under the floor of the 4 <sup>th</sup> ventricle .....	29
4.3.3 Reticular formation .....	30
4.4 Midbrain – mesencephalon .....	31
4.4.1 External features .....	31
4.4.2 Inner structure .....	31
<b>5. Cerebellum</b> .....	34
5.1 External features .....	34
5.2 Developmental and functional classification of cerebellum .....	35
5.3 Inner structure .....	36
5.4 Cerebellar dysfunction .....	38
<b>6. Diencephalon</b> .....	39
6.1 Epithalamus .....	40
6.2 Thalamus .....	40
6.3 Metathalamus .....	43
6.4 Subthalamus .....	44
6.5 Hypothalamus .....	45
6.6 Hypophysis, pituitary gland .....	47
6.7 Commisural and association tracts in the diencephalon .....	48

<b>7. Telencephalon</b>	49
7.1 External features	49
7.2 Inner structure	52
7.2.1 Isocortex (neocortex)	52
7.2.2 Basal ganglia	56
7.2.2.1 Connections of the corpus striatum	58
7.2.2.2 Function of the basal ganglia	58
7.2.2.3 Disorders of the basal ganglia function	59
7.2.3 Allocortex and limbic system	60
7.2.3.1 Olfactory brain (rhinencephalon)	60
7.2.3.2 Hippocampal formation	61
7.2.3.3 Limbic system	62
7.2.3.3.1 Functions of the limbic system	63
7.2.4 Cerebral white matter, internal capsule	65
<b>8. Tracts and pathways of the CNS</b>	67
8.1 Ascending projection tracts (sensory, afferent)	67
8.1.1 Direct ascending tracts	68
8.1.1.1 Dorsal columns (spinobulbar tracts)	68
8.1.1.2 Spinothalamic tract	68
8.1.1.3 Trigeminothalamic tract	71
8.1.2 Indirect ascending tracts	71
8.1.2.1 Spinoreticular tract (spinoreticulothalamic system)	71
8.1.2.2 Spinotectal tract	72
8.1.2.3 Spinocerebellar tract – anterior (Gowers), posterior (Flechsig)	72
8.1.2.4 Bulbocerebellar tract	73
8.1.2.5 Nucleocerebellar tracts	73
8.2 Descending projection tracts (motor, efferent)	73
8.2.1 Direct descending tracts	74
8.2.1.1 Corticospinal (pyramidal) tract	74
8.2.1.2 Corticonuclear (corticobulbar) tract	75
8.2.2 Indirect (extrapyramidal) tracts	75
8.2.3 Cerebellar tracts	78
8.2.3.1 Afferent cerebellar tracts	78
8.2.3.2 Efferent cerebellar tracts	79
8.3 Association tracts	79
8.3.1 Spinal association tracts	79
8.3.2 Brain stem association tracts	79
8.3.3 Diencephalon association tracts	80
8.3.4 Telencephalon association tracts	80
8.4 Commissural tracts	81
8.4.1 Spinal commissural tracts	81
8.4.2 Brain stem commissural tracts	81
8.4.3 Commissural tracts in the diencephalon and telencephalon	81
8.5 Special sensory pathways and systems	82
8.5.1 Olfactory system	82
8.5.2 Visual system	83
8.5.2.1 Pupillary light reflex – miosis	85
8.5.2.2 Pupillary reflex – mydriasis	85
8.5.2.3 Accommodation-convergence reaction	86
8.5.2.4 Accommodation, miosis	86
8.5.2.5 Convergence	87
8.5.2.6 Saccadic eye movements	87
8.5.2.7 Corneal reflex	87
8.5.3 Auditory system	88
8.5.4 Vestibular system	89
8.5.5 Taste pathway	90
8.6 Lesions of the CNS tracts	91

<b>9. Ventricular system and cerebrospinal fluid</b> .....	93
9.1 Ventricles and channels of the CNS .....	93
9.1.1 Lateral ventricles .....	95
9.1.2 Third ventricle .....	95
9.1.3 Mesencephalic aqueduct .....	96
9.1.4 Fourth ventricle .....	96
9.1.5 Central canal of the spinal cord .....	96
9.2 Circumventricular organs .....	96
9.3 Cerebrospinal fluid .....	98
<b>10. Coverings of the CNS</b> .....	99
10.1 Dura mater .....	99
10.1.1 Cranial dura mater .....	99
10.1.2 Spinal dura mater .....	101
10.2 Arachnoid mater .....	101
10.3 Pia mater .....	102
<b>11. Blood supply of the CNS</b> .....	103
11.1 Blood supply of the brain .....	103
11.1.1 Arteries of the brain .....	103
11.1.1.1 Arterial supply of the hemispheres and the midbrain .....	103
11.1.1.2 Arterial supply of the medulla oblongata, pons and cerebellum .....	105
11.1.2 Veins of the brain .....	106
11.1.3 Interconnections of the intracranial and extracranial veins .....	109
11.2 Blood supply of the spinal cord (Fig. 11.8) .....	109
11.2.1 Arteries of the spinal cord .....	109
11.2.2 Veins of the spinal cord .....	110
<b>References</b> .....	111





# Preface

*This concise overview of CNS anatomy is intended for first year medical students, who often find the neuroanatomy course one of the most difficult parts of their study. The text presents the basic CNS structures and their interrelations. The accompanying simplified drawings should make it easier for the students to understand the text; however, they are not intended to substitute for pictures in neuroanatomy textbooks. More detailed information can be found in the recommended literature listed under "References".*

*We hope that this short overview will help the students understand the nervous system in its functional unity.*

J. V., P. F.



# 1/ Cells of the nervous system

## 1.1 Neurones

The neurone is the basic structural and functional unit. The total number of neurones in the human body is estimated at  $10^{10}$ , their size varies from  $5\mu\text{m}$  (interneurones) to more than  $100\mu\text{m}$  (motor neurones).

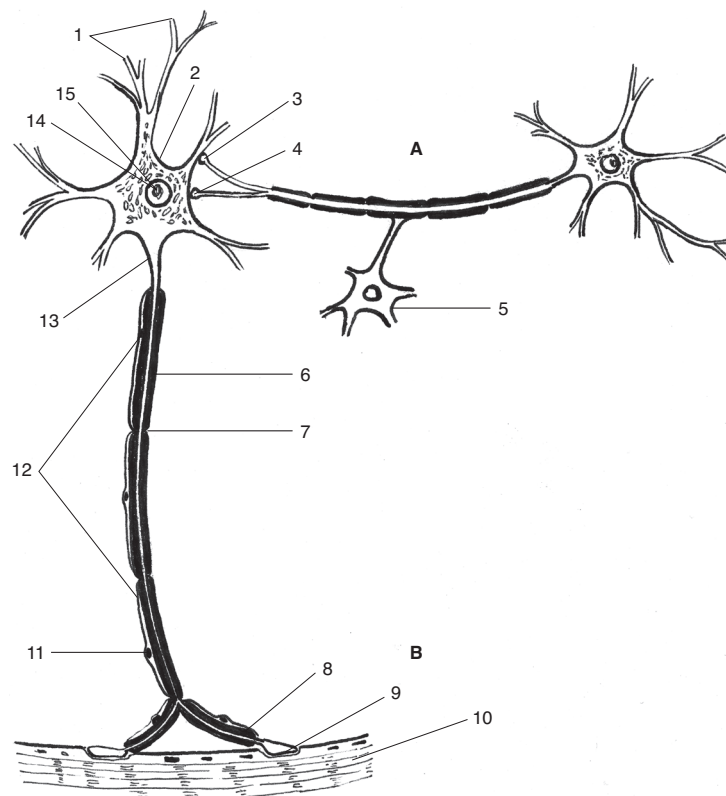


Fig. 1.1 **Diagram of neurones and their connections**

*A – upper motoneurone located within the CNS*

*B – lower motoneurone*

1 – dendrites, 2 – perikaryon, 3 – axodendritic synapse, 4 – axosomatic synapse, 5 – oligodendroglia, 6 – myelin sheath, 7 – node of Ranvier, 8 – telodendron, 9 – motor end-plate, 10 – skeletal muscle, 11 – Schwann cell (in PNS), 12 – axon, 13 – initial segment, 14 – nucleus, 15 – Nissl bodies